

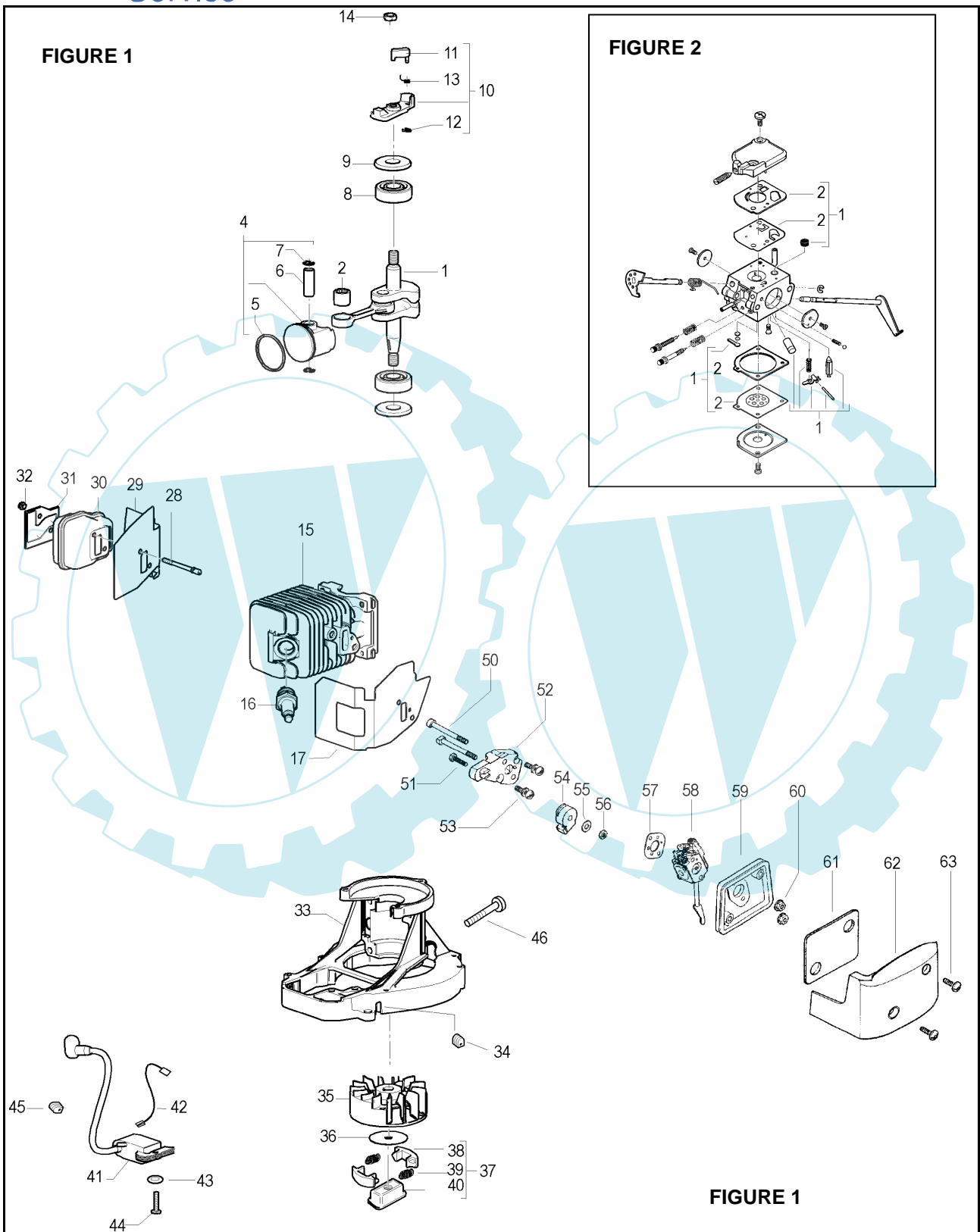
**ELECTROLUX OUTDOOR PRODUCTS**

<b>PNC</b>	<b>Type/Prefix/nd</b>	<b>Model</b>	<b>Brand</b>
953900128 24802300B	10	VIRGINIA MH 542 (yellow covers)	McCulloch
953900129 24801400B	10	VIRGINIA MH 555 (yellow covers)	McCulloch
953900213	10	HG 17 (yellow covers)	Partner
953900180	10	HG 22 (yellow covers)	Partner
953900706	10	XLH 420 (orange covers)	Flymo

Number of Pages 1 of 5

<b>Factory:</b> IIQ - Valmadrera	<b>Product Group:</b> OP 93
<b>Publication Number:</b> EIPL2005_VP0504025	<b>Petrol Portable</b>
<b>Publication Date:</b> 22/04/05	<b>Sub Group</b> 9435

 **The Electrolux Group. The world's No.1 choice.**



**The Electrolux Group. The world's No.1 choice.**

Item	P/N McC	P/N ELX	Qty	DESCRIPTION
------	---------	---------	-----	-------------

**FIGURE 1**

1	243486	538243486	1	crankshaft assy
C 2	235742	538235742	1	needle bearing 9x14x12
4	248177	538248177	1	piston kit
C 5	• 240002	538240002	1	piston ring
B 6	• 241735	538241735	1	piston pin
C 7	• 235008	538235008	2	snap ring
C 8	241594	538241594	2	ball bearing
C 9	242994	538242994	2	seal
10	241784	538241784	1	starter pawl assy
11	• 241781	538241781	1	ratchet
C 12	• 111088	538111088	1	snap ring
13	• 241782	538241782	1	spring
14	241624	538241624	1	nut M8
15	242803	538242803	1	cylinder
16	92879	538092879	1	spark plug RDJ8J
17	242860	538242860	1	cylinder spacer gasket
A 28	242037	538242037	2	muffler stud bolt
C 29	242517	538242517	1	gasket
30	242131	538242131	1	muffler
C 31	322231	538322231	1	exhaust baffle
C 32	235642	538235642	2	nut M5 self locking
33	242802	538242802	1	engine carter
34	241607	538241607	1	wire grommet
35	243311	538243311	1	flywheel
36	241604	538241604	1	clutch dust shield
B 37	241793	538241793	1	clutch assy
38	• 241743	538241743	2	clutch shoe
A 39	• 241794	538241794	2	clutch spring
40	• 241789	538241789	1	clutch rotor
41	243429	538243429	1	ignition coil
42	241630	538241630	1	ignition cable/ switch
43	235248	538235248	2	washer d. 5x10x1
C 44	235806	538235806	2	screw M5x20
45	236322	538236322	1	grommet
46	227565	538227565	4	screw 5x25-12,9
50	111057	538111057	2	screw 10-24
51	240131	538240131	1	screw M5x20
C 52	241590	538241590	1	carb. Spacer
53	235206	538235206	2	screw M5x20 + washer
54	241644	538241644	1	throttle cable guide
55	235163	538235163	1	washer
56	235642	538235642	1	nut M5
57	241600	538241600	1	carb.-spacer gasket
58	<b>FIGURE 2</b>			
59	241647	538241647	1	air filter housing
60	111058	538111058	2	nut 10-24
C 61	241652	538241652	1	air filter
62	242742	538242742	1	air filter cover (yellow)
	243590	538243590	1	air filter cover (orange)
63	218644	538218644	2	screw

Item	P/N McC	P/N ELX	Qty	DESCRIPTION
------	---------	---------	-----	-------------

**FIGURE 2 ZAMA M32-C**

C -	242813	538242813		carburettor
B 1	• 300465	538300465	1	carburettor repair kit
A 2	•• 300473	538300473	1	diaphragm+gasket kit

A=ALTA ROTAZIONE  
B=MEDIA ROTAZIONE  
C=ALTA ROTAZIONE  
NUOVI CODICI

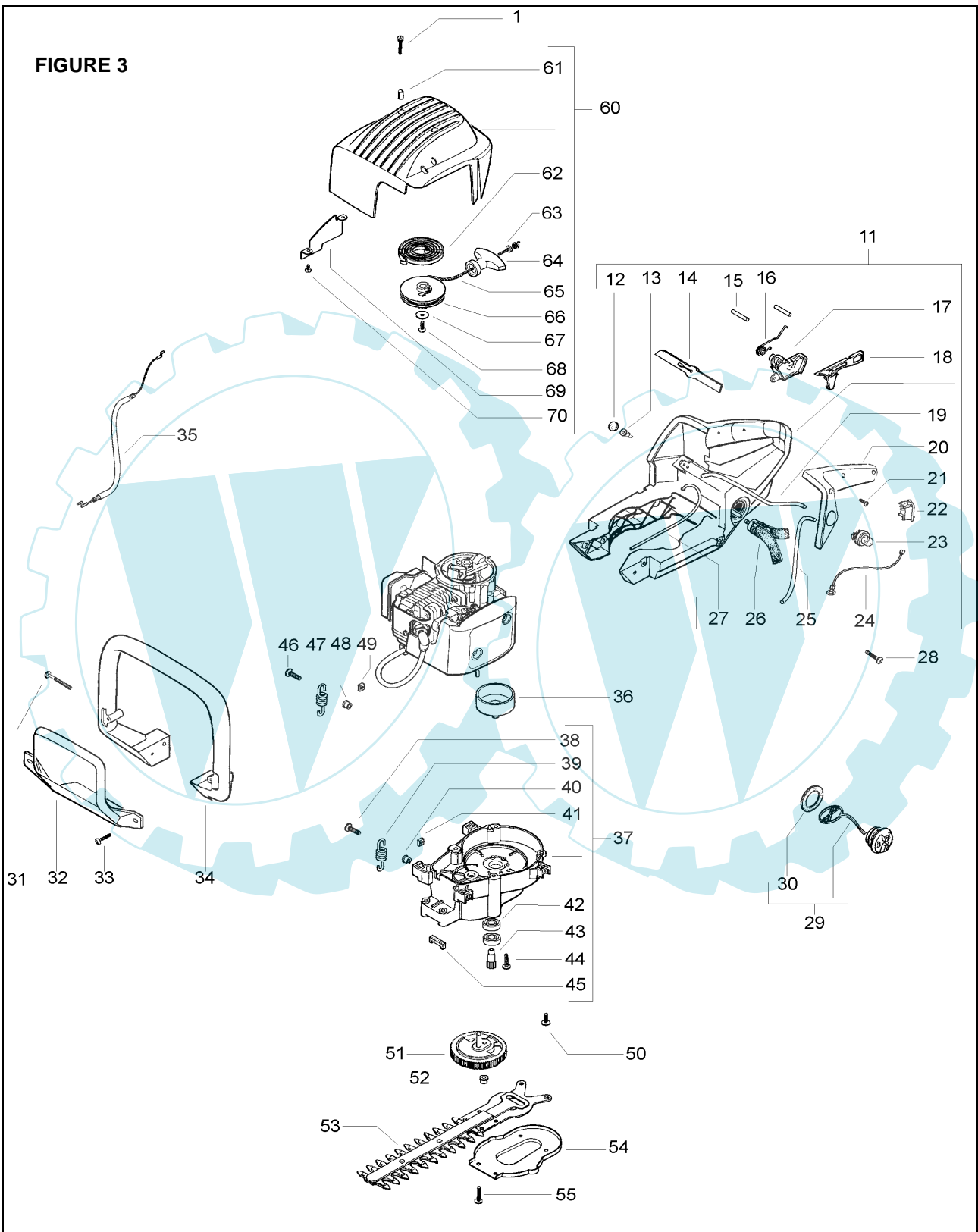
A=HIGH MOVING  
B=MEDIUM MOVING  
C=SLOW MOVING  
NEW P. NUMBERS

A=HAUTE DEMANDE  
B=MOYENNE DEMANDE  
C=BASSE DEMANDE  
NOUVELLES REFERENCES

A=GROBE NACHFRAGE  
B=MITTELMAESSIGE  
C=WENIGE NACHFRAGE  
NEU CODEX

 **The Electrolux Group. The world's No.1 choice.**

FIGURE 3



 **The Electrolux Group. The world's No.1 choice.**

Item	P/N McC	P/N ELX	Qty	DESCRIPTION
------	---------	---------	-----	-------------

Item	P/N McC	P/N ELX	Qty	DESCRIPTION
------	---------	---------	-----	-------------

**FIGURE 3**

1	241963	538241963	3	screw M4x22	50	227568	538227568	4	screw M4x20
C 11	243363	538243363	1	rear handle assy	C 51	242457	538242457	1	blade gear
C 12	• 241717	538241717	1	valve felt	B 52	242521	538242521	1	bushing
C 13	• 322199	538322199	1	valve duckbill	C 53	242458	538242458	1	17" blade assy
14	• 241709	538241709	1	cable holder	C 53	242584	538242584	1	22" blade assy
15	• 241762	538241762	2	pin d.4x25,5	54	241761	538241761	1	gear box cover
16	• 241637	538241637	1	spring	55	111117	538111117	6	screw 10-14x1"
C 17	• 241635	538241635	1	throttle rigger	60	241858	538241858	1	cover assy (yellow)
C 18	• 241636	538241636	1	safety lever		243588	538243588	1	cover assy (orange)
B 19	• 241777	538241777	1	mix pipe	61	• 241617	538241617	3	bushing 5x10
20	• 243332	538243332	1	half handle left	B 62	• 241619	538241619	1	starter spring
21	• 240862	538240862	3	screw - self threading 4x18	63	• 235612	538235612	1	washer d.4x9x0,8
C 22	• 242439	538242439	1	switch	64	• 241778	538241778	1	starter's handle
C 23	• 224242-01	538022424	1	primer	A 65	• 241746	538241746	1	starter rope
24	• 241867	538241867	1	ground cable	B 66	• 241620	538241620	1	starter pulley
B 25	• 241776	538241776	1	primer pipe	67	• 241703	538241703	1	washer d.4x16x0,8
A 26	• 240452	538240452	1	pick up	68	• 240862	538240862	1	screw - self threading 4x18
B 27	• 241775	538241775	1	tube mix	69	• 241758	538241758	1	air conductor
28	111117	538111117	2	screw 10-14x1"	70	• 111069	538111069	2	screw 8x16x0,375
B 29	240865	538240865	1	fuel cap assy					
C 30	• 235510	538235510	1	o-ring					
31	219883	538219883	4	screw 10-14x1,69					
32	241654	538241654	1	front handle protection					
33	111117	538111117	2	screw 10-14x1"					
34	241868	538241868	1	front handle					
C 35	241642	538241642	1	gas cable					
C 36	241771	538241771	1	clutch drum					
37	249083	538249083	1	gear box assy					
38	• 217936	538217936	2	screw 10-24x0,75					
C 39	• 241634	538241634	2	spring					
40	• 241765	538241765	2	bushing					
41	• 218005	538218005	2	square nut 10-24					
42	• 235897	538235897	2	ball bearing 10x26x8 (6000-2RS1)					
43	• 225007-01	538225007	1	gear					
44	• 218644	538218644	2	screw 10-14x0,75					
45	• 241633	538241633	1	dust shield					
46	217936	538217936	2	screw 10-24x0,75					
C 47	241634	538241634	2	spring					
48	241765	538241765	2	bushing					
49	218005	538218005	2	square nut 10-24					

A=ALTA ROTAZIONE  
B=MEDIA ROTAZIONE  
C=ALTA ROTAZIONE  
NUOVI CODICI

A=HIGH MOVING  
B=MEDIUM MOVING  
C=SLOW MOVING  
NEW P. NUMBERS

A=HAUTE DEMANDE  
B=MOYENNE DEMANDE  
C=BASSE DEMANDE  
NOUVELLES REFERENCES

A=GROBE NACHFRAGE  
B=MITTELMAESSIGE  
C=WENIGE NACHFRAGE  
NEU CODEX

 **The Electrolux Group. The world's No.1 choice.**